



## Bridge Rectifiers

**Reverse Voltage 600V-1000v**

**Forward current-1A**

### Features

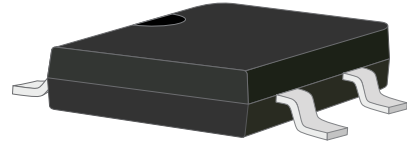
Glass passivated chip

High surge current capability

Ideal for surface mounted applications

Low power loss, high efficiency

Plastic Case Material has UL Flammability



### Mechanical Data

Package: MBF

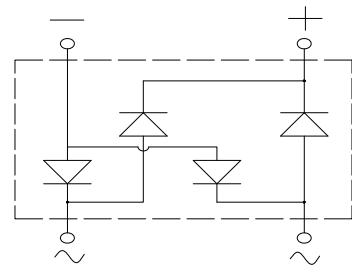
Terminals: Tin Plated leads, solderable per

Mil-STD-750 Method 2026

Polarity: As marked

Molding compound meets UL 94 V-0 flammability rating,

ROHS-compliant



### Maximum Ratings (Ta=25°C Unless otherwise specified)

Type Number	SYMBOL	MB6F	MB8F	MB10F	Unit
Maximum Recurrent Peak Reverse Voltage	$V_{RRM}$	600	800	1000	V
Maximum RMS Voltage	$V_{RMS}$	420	560	700	V
Maximum DC Blocking Voltage	$V_{DC}$	600	800	1000	V
Maximum Average Forward Rectified Current at $T_L = 100^\circ\text{C}$	$I_{O(AV)}$	1.0			A
Peak Forward Surge Current 8.3ms Single half-sine-wave superimposed on rated load(JEDEC Method) on rated	IFSM	35.0			A
Forward Surge Current (Non-repetitive) @1ms, square wave, 1 cycle, $T_j=25^\circ\text{C}$		70.0			
Current squared time @ $1\text{ms} \leq t \leq 8.3\text{ms}$ $T_j=25^\circ\text{C}$ , Rating of per diode	$I^2t$	5.1			$\text{A}^2\text{S}$
Maximum Forward Voltage at 1.0A DC	$V_{FM}$	1.1			V
Maximum Reverse Current $T_A = 25^\circ\text{C}$	IR	5			uA
at Rated DC Blocking Voltage $T_A = 100^\circ\text{C}$		100			
Typical Junction Capacitance	CJ	17			pF
Typical Thermal Resistance Between junction and ambient	$R_{QJa}$	70.0			$^\circ\text{C}/\text{W}$
Operating Junction Temperature Range	$T_J$	-55to+150			$^\circ\text{C}$
Storage Temperature Range	$T_{STG}$	-55to+150			$^\circ\text{C}$



FIG. 1 MAXIMUM AVERAGE FORWARD CURRENT DERATING

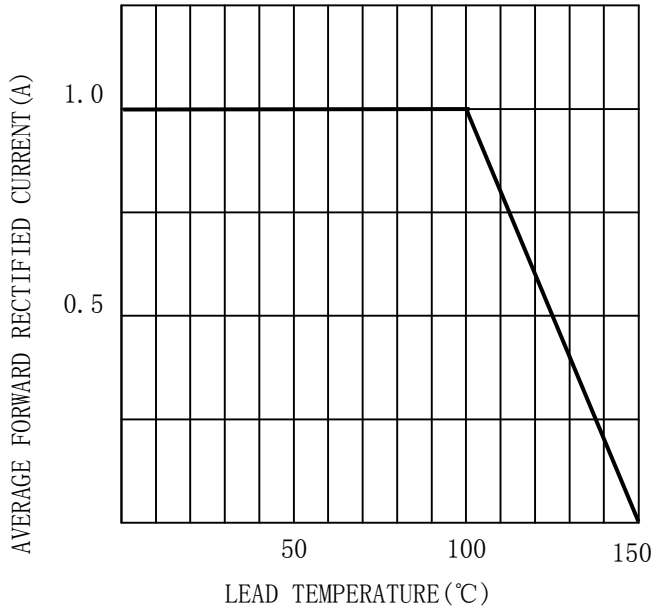


FIG. 2 TYPICAL FORWARD CHARACTERISTICS

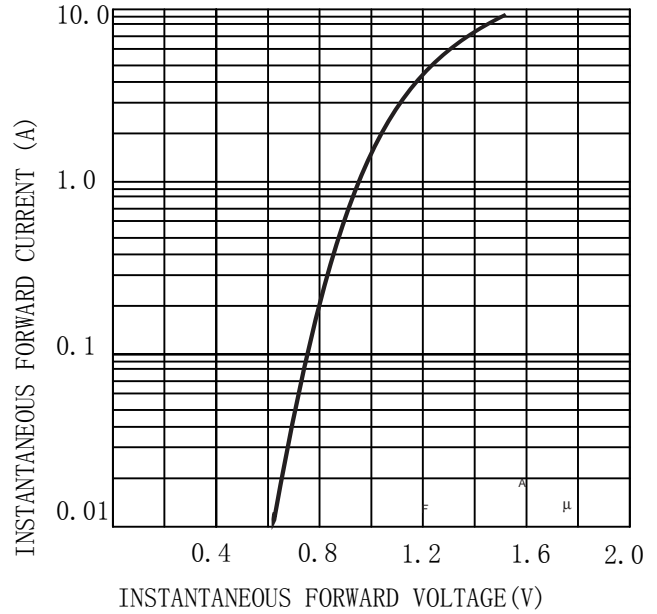


FIG. 3 MAXIMUM NON-REPEITIVE SURGE CURRENT

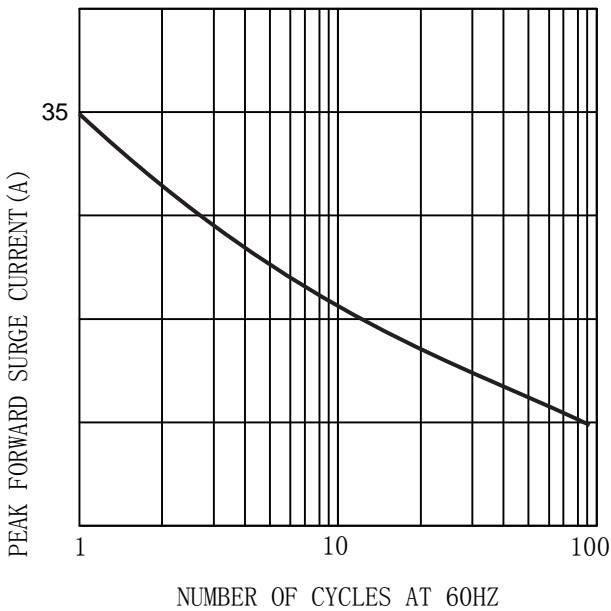
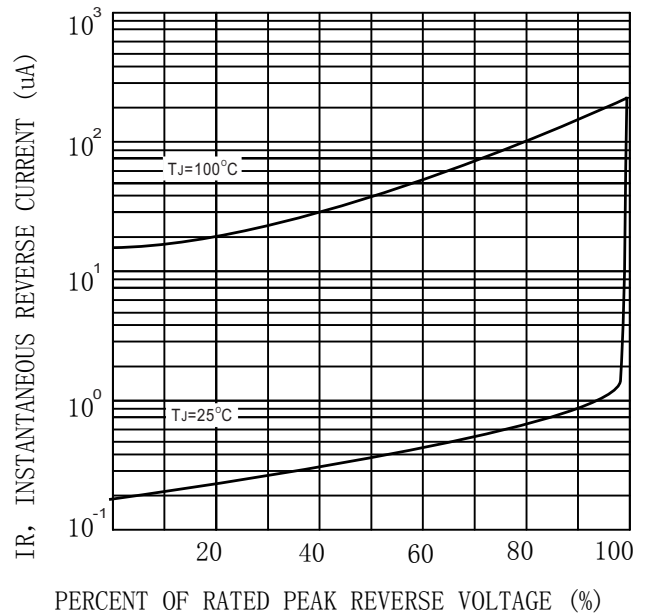
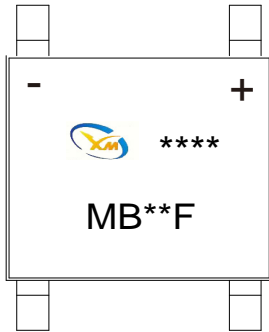


FIG. 4 TYPICAL REVERSE CHARACTERISTICS (per element)





## MARKING INFORMATION



= Logo

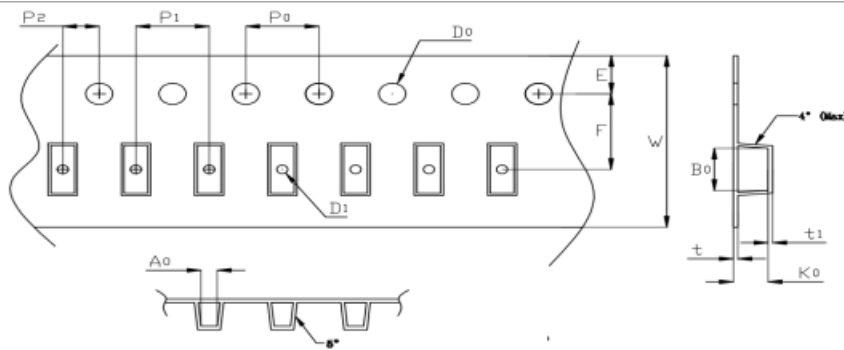
\*\*\*\* = Date Code Marking

MB\*\*F = Marking Code

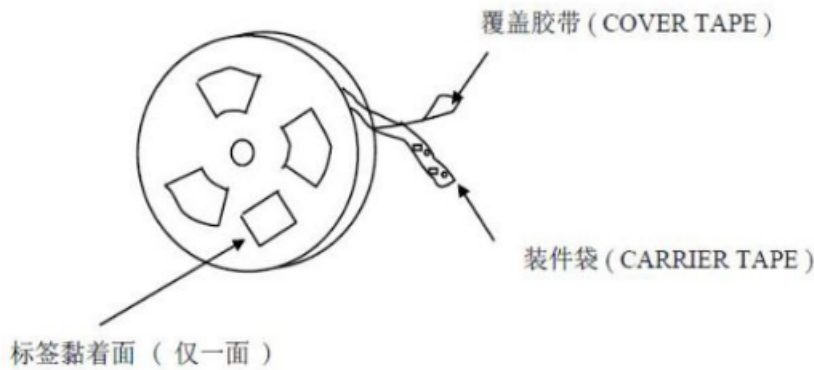
Print according to customer request

## PACKING REQUIRMENTS

Carrier tape packing



Specifications	Carrier tape type	Ao	Bo	Ko	Po	W	t	Explain
MBF	Anti-static	5.2±0.10	7.12±0.10	1.72±0.10	4.00±0.10	12.0±0.10	0.23±0.05	

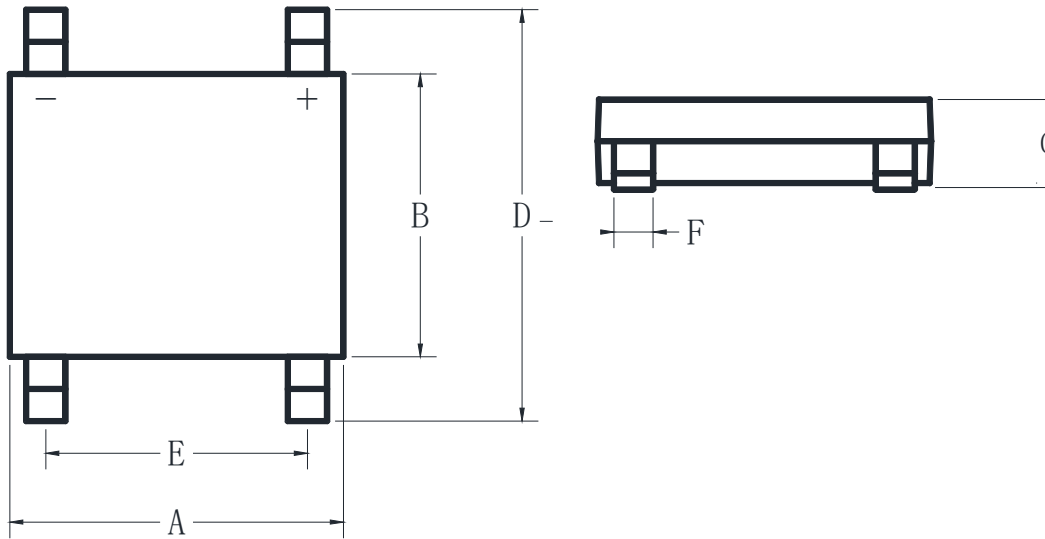


DEVICE TYPE	Tape width	13" Reel		
		Q'TY/REEL (pcs)	BOX/CARTON	Q'TY/REEL (pcs)
MBF	12mm	5000	20	100000



## Outline Dimensions

MBF



MBF				
DIM	INC HES		MM	
	MIN	MAX	MIN	MAX
A	0.18	0.20	4.5	5.1
B	0.14	0.16	3.6	4
C	0.05	0.11	1.2	2.7
D	0.24	0.30	6	7.5
E	0.08	0.12	2	3
F	0.02	0.04	0.4	1



## **Important Statements and disclaimers.**

Do not copy or modify file information without permission.

Xumao Micro reserves the right to modify this document and its products.

Specifications are available without prior notice. Customer shall obtain and confirm the latest product information and specifications prior to final design, purchase or use.

Xumao Micro does not assume any implied warranties, including warranties of fitness for special purposes, non-infringement and merchantability.

The products shown here are not designed and licensed for demanding equipment at a level of reliability or for human life and any life-saving related applications or life-sustaining, such as medical devices, transportation equipment, aerospace machinery, and so on. Customers who use or sell these products for such applications do so at their own risk.

As Xumao Micro uses batch number as tracking benchmark, please provide batch number for tracking in case of exception.