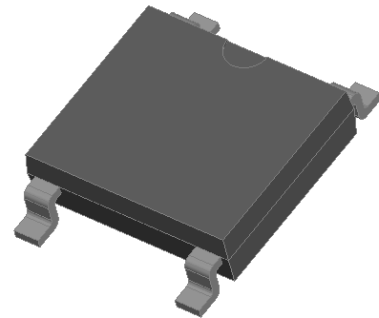




**Schottky rectifier bridge**  
**Reverse Voltage-100v**  
**Forward current-2A**

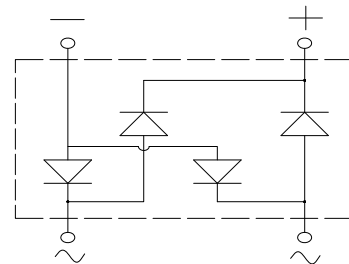
**Features**

- Schottky chip
- High surge current capability
- Low power losses, high efficiency
- Ideal for surface mounted applications
- Plastic Case Material has UL Flammability



**Mechanical Data**

- Package: ABS
- Terminals: Tin Plated leads, solderable per Mil-STD-750 Method 2026
- Polarity: As marked
- Molding compound meets UL 94 V-0 flammability rating, ROHS-compliant



**Maximum Ratings (Ta=25°C Unless otherwise)**

Type Number	SYMBOL	ABS210K	Umit
Maximum Recurrent Peak Reverse Voltage	$V_{RRM}$	100	V
Maximum RMS Voltage	$V_{RMS}$	70	V
Maximum DC Blocking Voltage	$V_{DC}$	100	V
Maximum Average Forward Rectified Current at TL = 100 °C	$I_{O(AV)}$	2.0	A
Peak Forward Surge Current 8.3ms Single half-sine-wave superimposed on rated load(JEDEC Method) on rated	IFSM	40.0	A
Forward Surge Current (Non-repetitive) @1ms, square wave, 1 cycle, Tj=25°C		80.0	
Current squared time @1ms≤t≤8.3ms Tj=25°C, Rating of per diode	$I^2t$	6.6	A <sup>2</sup> S
Maximum Forward Voltage at 2.0A DC	$V_{FM}$	0.85	V
Maximum Reverse Current TA = 25°C	IR	0.05	mA
at Rated DC Blocking Voltage TA = 100°C		5	
Typical Thermal Resistance Between junction and ambient	$R_{QJa}$	62.5	°C/W
Operating Junction Temperature Range	$T_J$	-55to+150	°C
Storage Temperature Range	$T_{STG}$	-55to+150	°C



FIG. 1 MAXIMUM AVERAGE FORWARD CURRENT DERATING

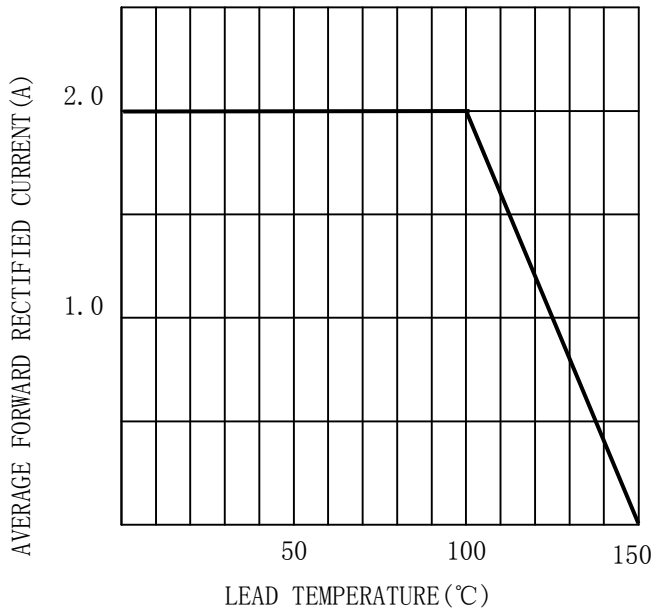


FIG. 2 TYPICAL FORWARD CHARACTERISTICS

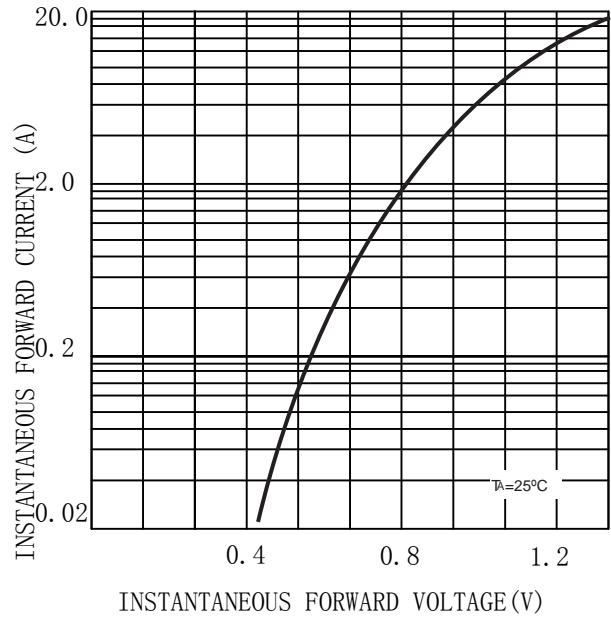


FIG. 3 MAXIMUM NON-REPEITIVE SURGE CURRENT

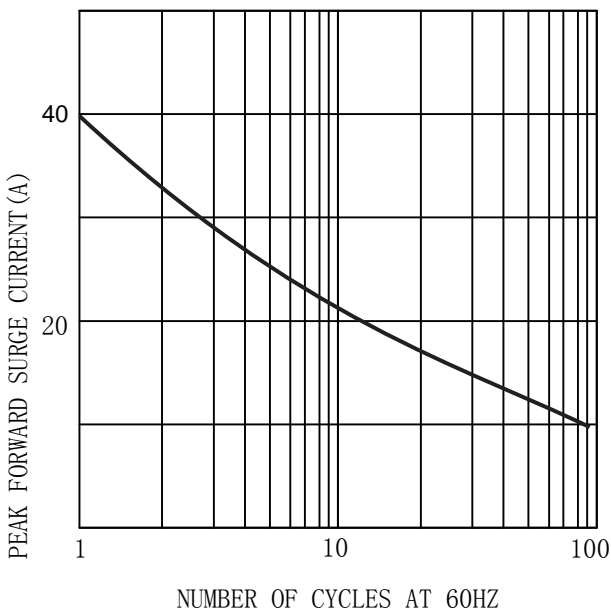
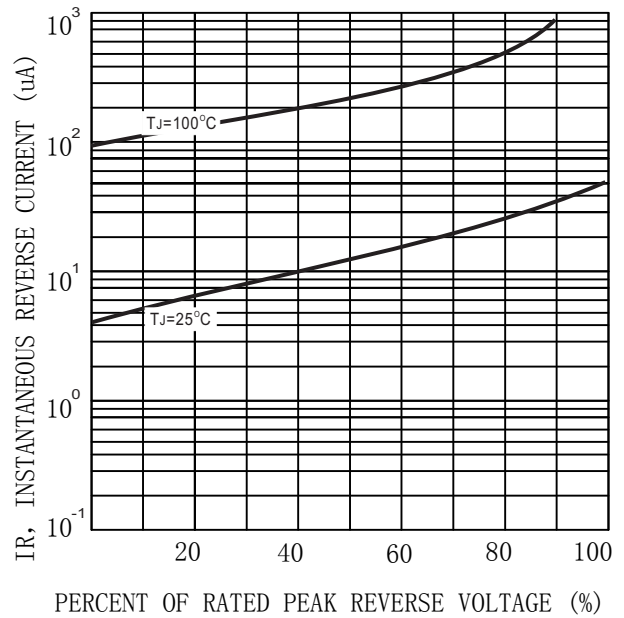


FIG. 4 TYPICAL REVERSE CHARACTERISTICS (per element)





## MARKING INFORMATION



= Logo



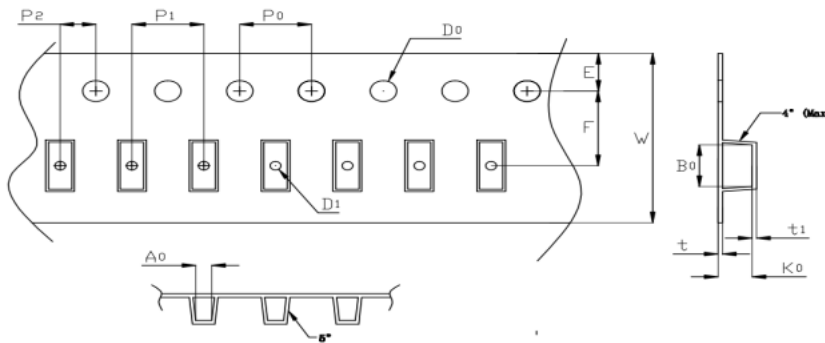
= Date Code Marking

ABS210K = Marking Code

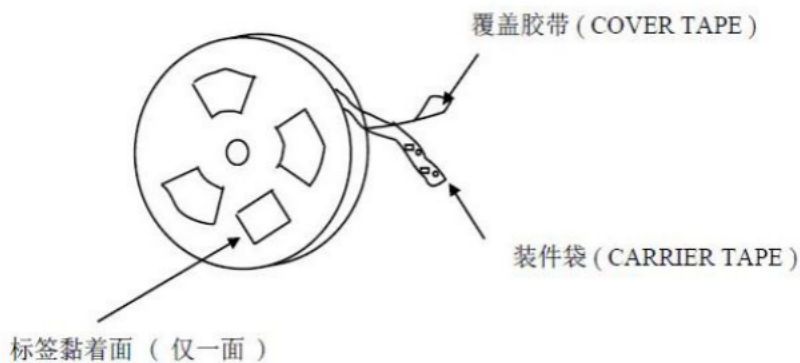
Print according to customer request

## PACKING REQUIRMENTS

- Carrier tape packing



Specifications	Carrier tape type	Ao	Bo	Ko	Po	W	t	Explain
ABS	Anti-static	5.31± 0.10	6.8± 0.10	1.59± 0.10	4.00± 0.10	12.0± 0.10	0.23± 0.05	

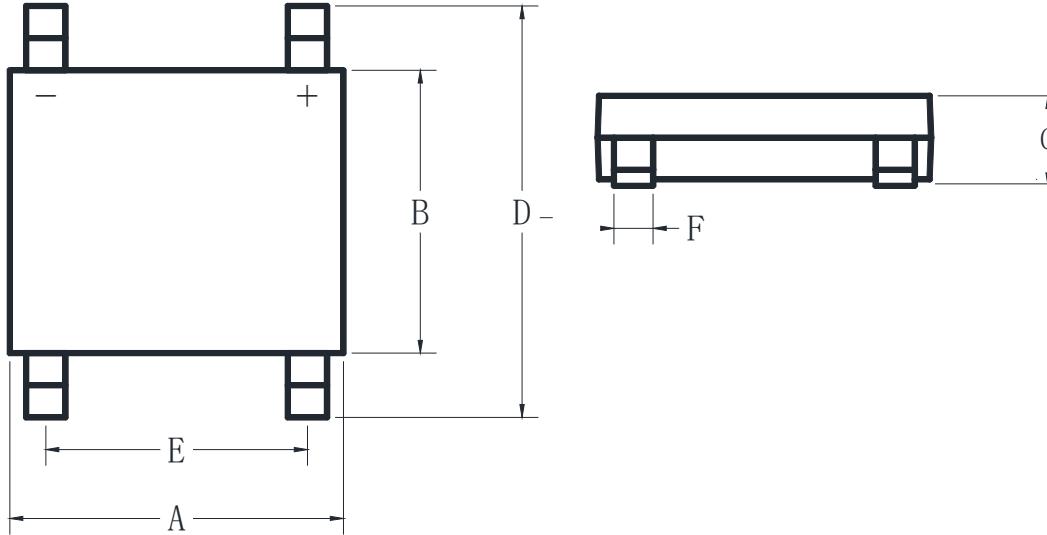


DEVICE TYPE	Tape width	13"Reel		
		Q'TY/REEL (pcs)	BOX/CAR TOON	Q'TY/REEL (pcs)
ABS	12mm	5000	20	100000



Outline Dimensions

ABS



ABS				
DIM	INC HES		MM	
	MIN	MAX	MIN	MAX
A	0.19	0.21	4.8	5.4
B	0.16	0.19	4.1	4.7
C	0.04	0.06	1.1	1.6
D	0.23	0.26	5.9	6.7
E	0.15	0.17	3.7	4.3
F	0.02	0.04	0.4	1



## **Important Statements and disclaimers.**

Do not copy or modify file information without permission.

Xumao Micro reserves the right to modify this document and its products.

Specifications are available without prior notice. Customer shall obtain and confirm the latest product information and specifications prior to final design, purchase or use.

Xumao Micro does not assume any implied warranties, including warranties of fitness for special purposes, non-infringement and merchantability.

The products shown here are not designed and licensed for demanding equipment at a level of reliability or for human life and any life-saving related applications or life-sustaining, such as medical devices, transportation equipment, aerospace machinery, and so on. Customers who use or sell these products for such applications do so at their own risk.

As Xumao Micro uses batch number as tracking benchmark, please provide batch number for tracking in case of exception.